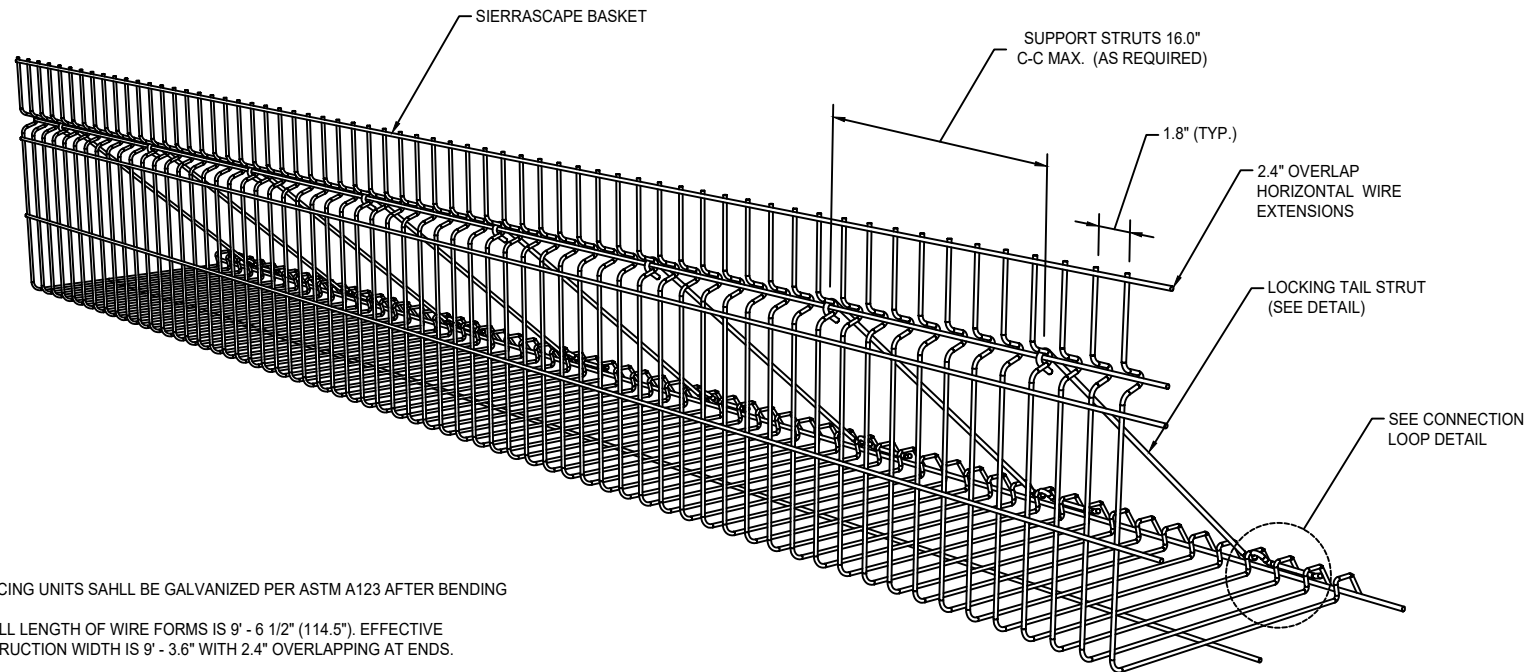
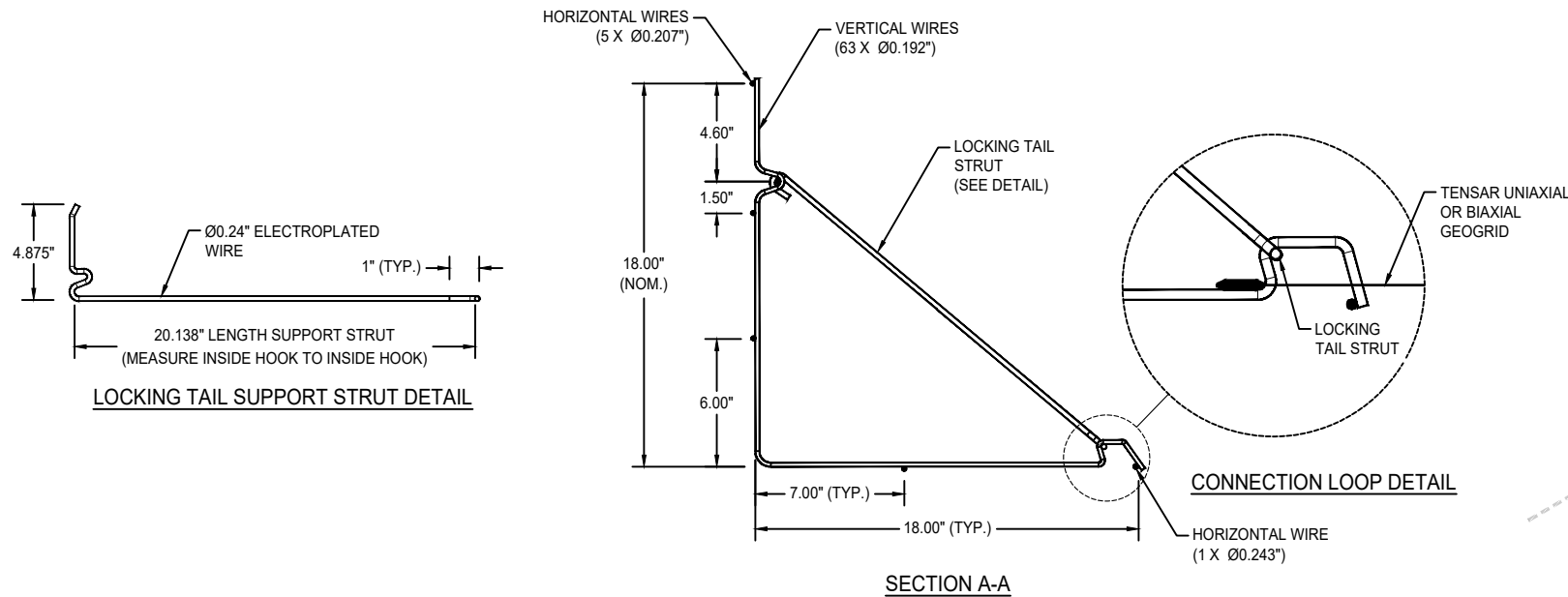
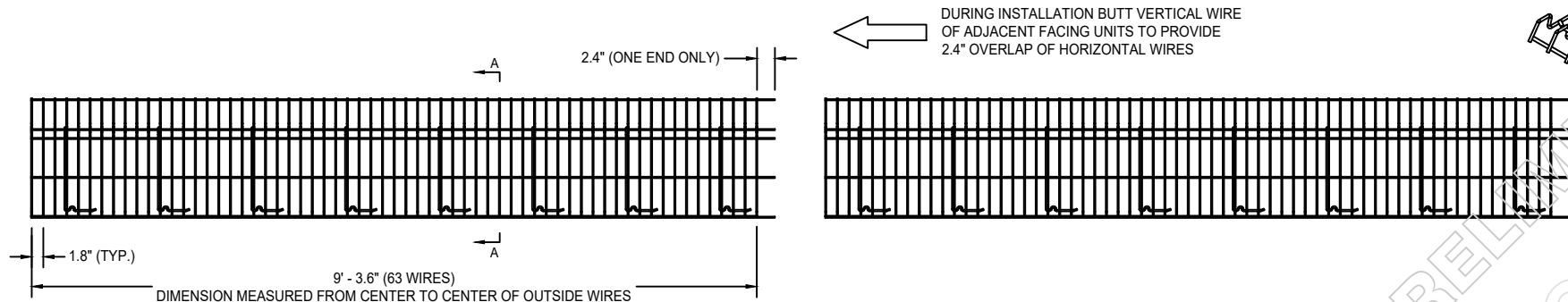


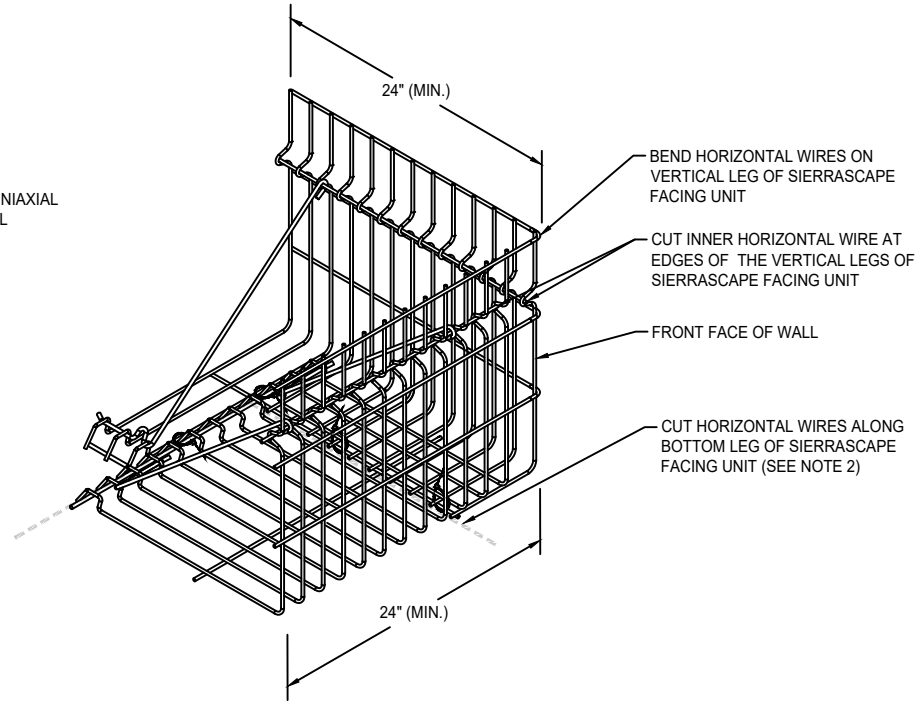
Plotted on: June 11, 2020  
K:\CAD\DETAILS\SIERRASCAPE\SIERRASCAPE STANDARD DETAILS.DWG



- NOTES:**
- ALL FACING UNITS SHALL BE GALVANIZED PER ASTM A123 AFTER BENDING
  - OVERALL LENGTH OF WIRE FORMS IS 9' - 6 1/2" (114.5"). EFFECTIVE CONSTRUCTION WIDTH IS 9' - 3.6" WITH 2.4" OVERLAPPING AT ENDS.

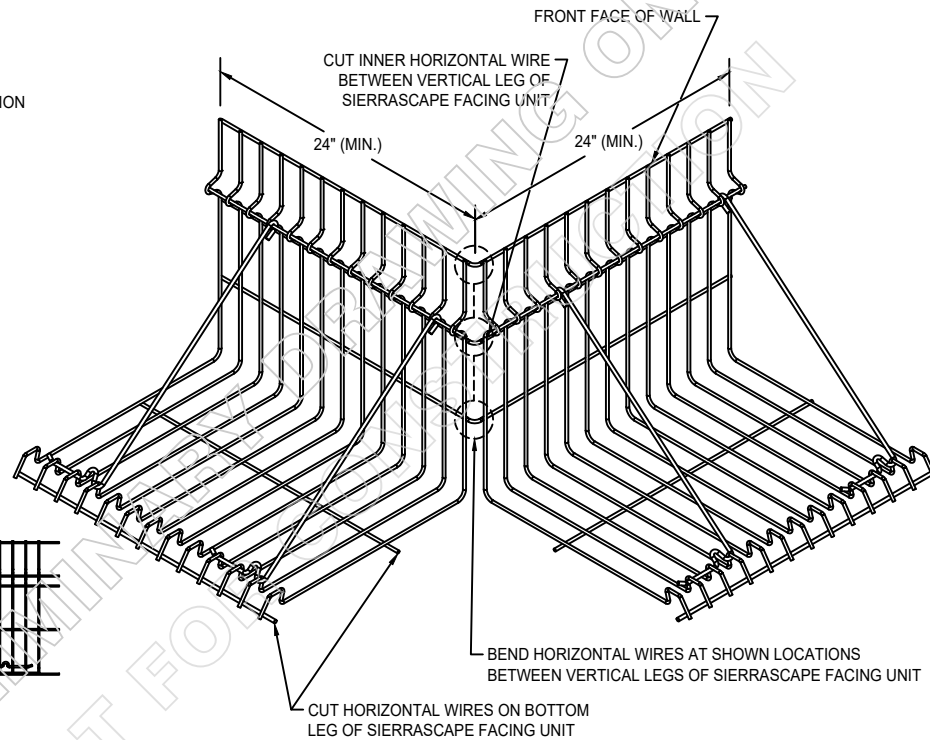


**SIERRASCAPE FACING UNIT**  
NOT TO SCALE



- NOTE:**
- SEE SIERRASCAPE FACING UNIT DETAIL FOR FACING MATERIALS AND DIMENSIONS.
  - CUT BOTTOM LEG FROM CONNECTION LOOPS TO SECOND HORIZONTAL WIRE TO ALLOW UNCUT LEG TO OVERLAP WHEN BENDING. SECURE WITH HOG WIRE OR ZIP TIE.

**SIERRASCAPE OUTSIDE CORNER UNIT**  
NOT TO SCALE



**NOTE:** SEE SIERRASCAPE FACING UNIT DETAIL FOR FACING MATERIALS AND DIMENSIONS

**SIERRASCAPE INSIDE CORNER UNIT**  
NOT TO SCALE

**Tensar.**

Tensar International Corporation  
2500 Northwinds Parkway | Suite 500  
Alpharetta, Georgia 30009 | 770-344-2090

THIS DOCUMENT IS A PRELIMINARY DESIGN AND SHOULD NOT BE USED FOR CONSTRUCTION. IT IS THE RESPONSIBILITY OF THE USER TO OBTAIN THE NECESSARY PERMITS AND APPROVALS FROM THE APPROPRIATE AGENCIES. TENSAR INTERNATIONAL CORPORATION DISCLAIMS ANY LIABILITY FOR ANY ERRORS OR OMISSIONS IN THIS DOCUMENT. ANY PARTY ACCEPTING THIS DOCUMENT DOES SO IN CONFIDENCE AND AGREES THAT IT SHALL NOT BE DUPLICATED, WHOLE OR IN PART, NOR DISCLOSED TO OTHERS, WITHOUT THE CONSENT OF TENSAR INTERNATIONAL CORPORATION.

© 2020, TENSAR INTERNATIONAL CORPORATION

PROJECT NAME AND LOCATION

**TIC STANDARD DETAILS**

OWNER

OWNER PROJECT No.

CLIENT

TIC PROJECT No.

DRAWN BY: O. MARTINEZ

DESIGNED BY:

CHECKED BY: R. JOHNSON

ENGINEER OF RECORD (MSE STRUCTURE ONLY):

06/11/20 ISSUED FOR REVIEW RJ

NO. DATE DESCRIPTION BY

REVISION / ISSUE

SHEET TITLE

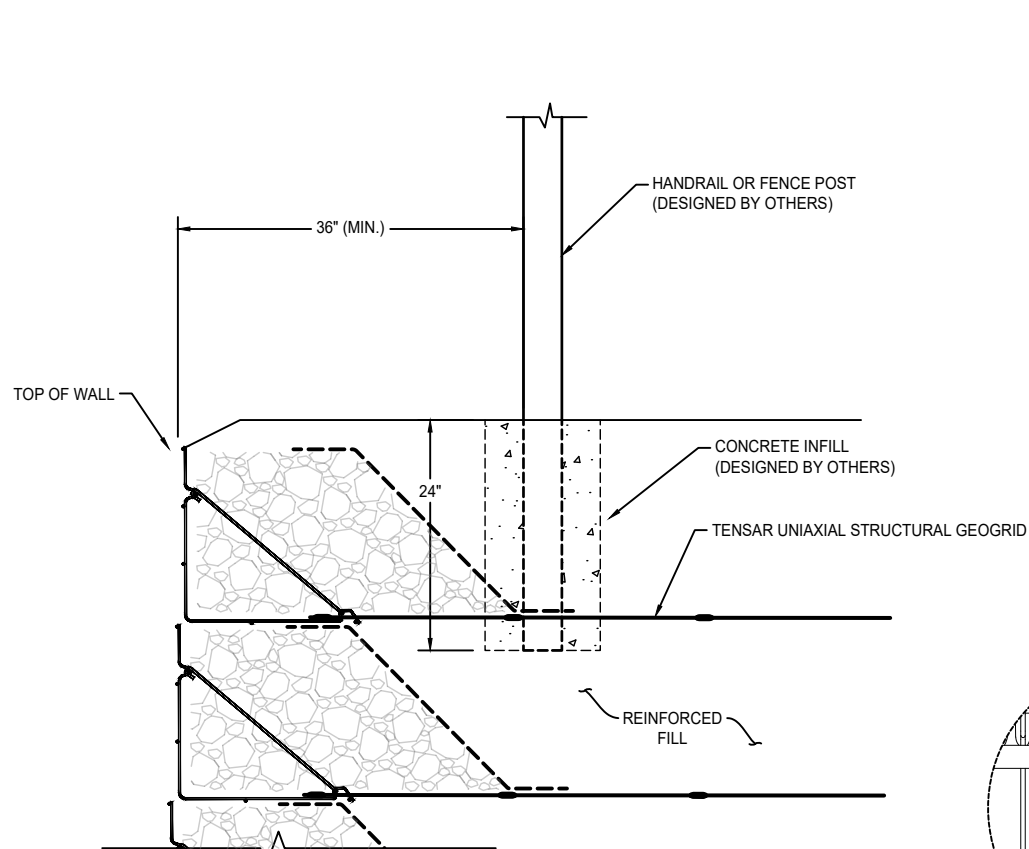
**SIERRASCAPE  
STANDARD DETAILS**

SCALE: AS SHOWN

SHEET 2 OF



Plotted on: June 11, 2020  
K:\CAD\DETAILS\SIERRASCAPE STANDARD DETAILS.DWG

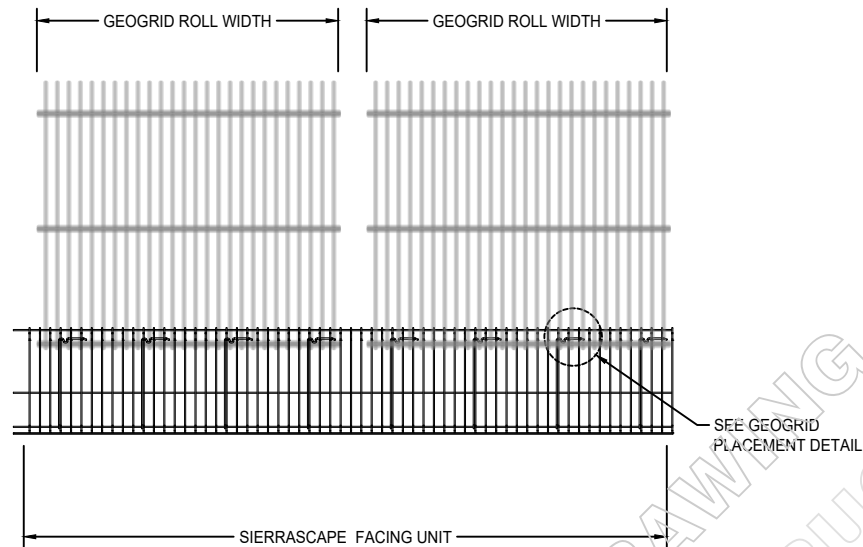


NOTES:

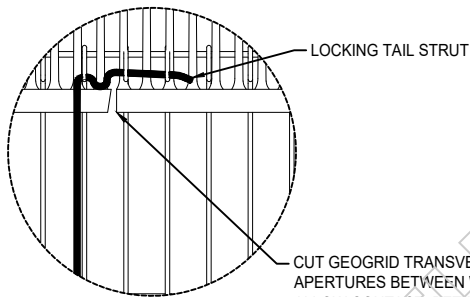
1. PLACE AND COMPACT BACKFILL TO FINISH GRADE
2. AUGER OR DRIVE POST THROUGH TENSAR GEOGRID, AS REQUIRED TO SPECIFIED DEPTH.
3. INSTALL POST AND FILL HOLE WITH 2000 PSI (MIN.) CONCRETE. OR IN ACCORDANCE WITH PROJECT SPECIFICATIONS, WHICHEVER IS MORE STRINGGENT.

**HANDRAIL OR FENCE POST DETAIL AT TOP  
OF SIERRASCAPE WALL**

NOT TO SCALE



**PLAN VIEW**



NOTES:

1. SEE SIERRASCAPE FACING UNIT DETAIL FOR FACING MATERIALS AND DIMENSIONS.
2. TWO ROLLS OF UNIAxIAL GEOGRID SHALL BE PLACED ON EACH SIERRASCAPE FACING UNIT WITH TWO GEOGRID RIBS BETWEEN EACH PAIR OF WIRE CONNECTION LOOPS.
3. DURING INSTALLATION BUTT VERTICAL WIRE OF ADJACENT FACING UNITS TO PROVIDE 2.4" OVERLAP OF HORIZONTAL WIRES.

**TYPICAL SIERRASCAPE GEOGRID COVERAGE**

NOT TO SCALE

**Tensar.**

Tensar International Corporation  
2500 Northwinds Parkway | Suite 500  
Alpharetta, Georgia 30009 | 770-344-2090

THIS DOCUMENT IS A PRELIMINARY DESIGN AND SHOULD NOT BE USED FOR CONSTRUCTION. IT IS THE RESPONSIBILITY OF THE USER TO OBTAIN THE NECESSARY INFORMATION FROM THE PROJECT OWNER AND THE DESIGNER TO ENSURE THAT THE DESIGN IS APPROPRIATE FOR THE PROJECT. THE USER SHALL NOT BE RESPONSIBLE FOR ANY ERRORS OR OMISSIONS IN THIS DOCUMENT. ANY PARTY ACCEPTING THIS DOCUMENT DOES SO IN CONFIDENCE AND AGREES THAT IT SHALL NOT BE DUPLICATED WHOLE OR IN PART, NOR DISCLOSED TO OTHERS, WITHOUT THE CONSENT OF TENSAR INTERNATIONAL CORPORATION.

© 2020, TENSAR INTERNATIONAL CORPORATION

PROJECT NAME AND LOCATION

**TIC STANDARD DETAILS**

OWNER

OWNER PROJECT No.

CLIENT

TIC PROJECT No.

DRAWN BY: O. MARTINEZ

DESIGNED BY:

CHECKED BY: R. JOHNSON

ENGINEER OF RECORD (MSE STRUCTURE ONLY):

0 06/11/20 ISSUED FOR REVIEW RJ

NO. DATE DESCRIPTION BY

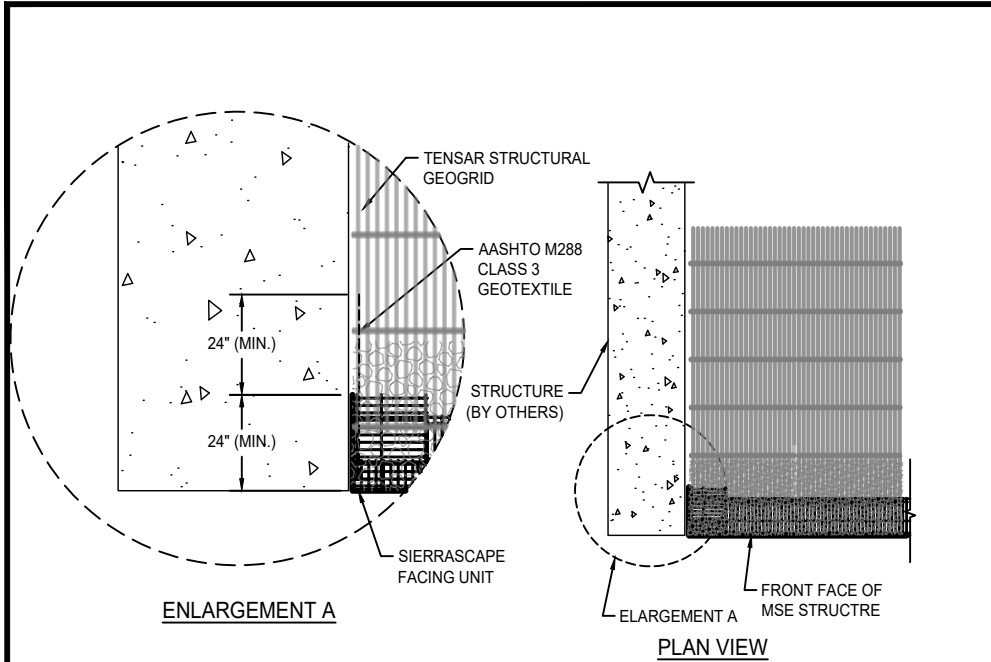
REVISION / ISSUE

SHEET TITLE

**SIERRASCAPE  
STANDARD DETAILS**

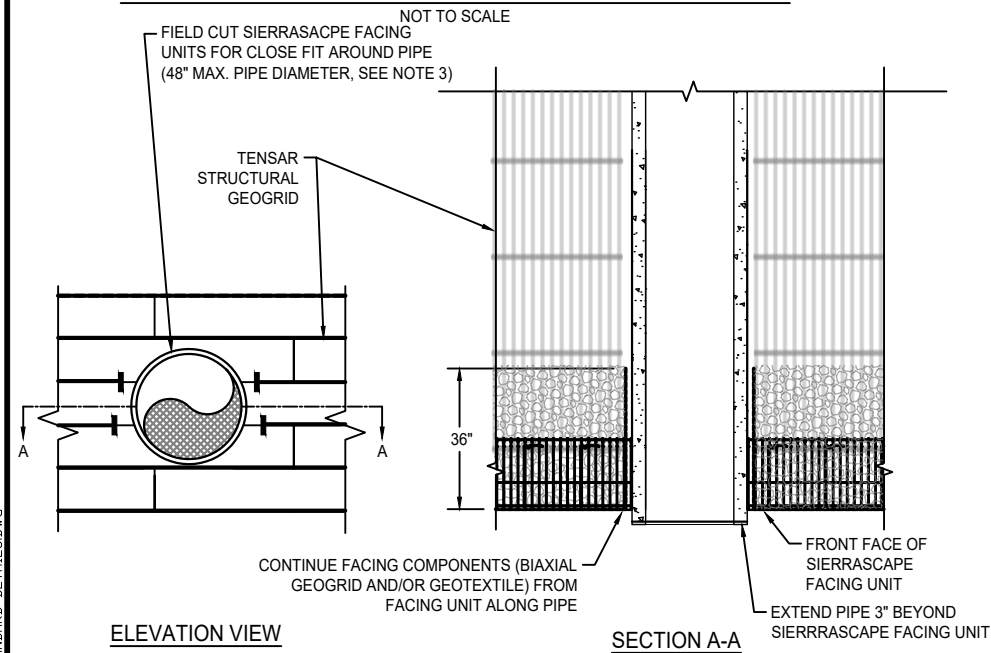
SCALE: AS SHOWN

SHEET 4 OF



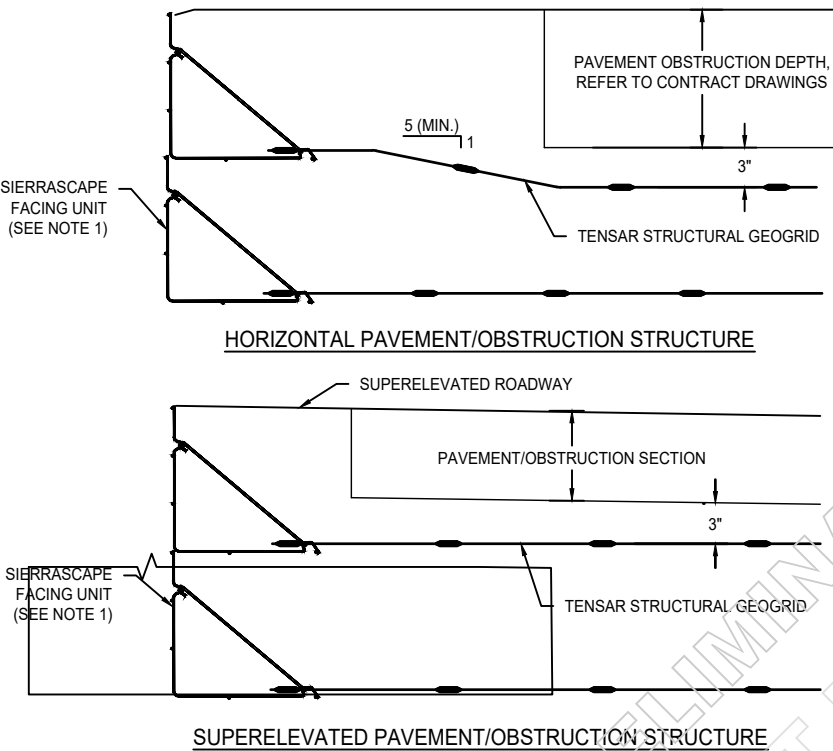
- NOTES:
1. EXTEND GEOGRID AND TRIM AT FACE OF STRUCTURE.
  2. BEND AND EXTEND SIERRASCAPE FACING UNIT BACK 24" (MIN.) ALONG FACE OF STRUCTURE. EXTEND GEOTEXTILE 24" (MIN.) ALONG FACE OF STRUCTURE PAST THE SIERRASCAPE FACING UNIT EXTENSION.
  3. LOCKING-TAIL STRUTS NOT SHOWN FOR CLARITY.

SIERRASCAPE WALL TRANSITION AT STRUCTURE



- NOTES:
1. SEE SIERRASCAPE FACING UNIT DETAIL FOR FACING MATERIALS AND DIMENSIONS.
  2. SEE ELEVATION VIEW FOR GEOGRID TYPE, LOCATION, AND DIMENSIONS.
  3. TERMINATE GEOGRIDS NO MORE THAN 3" FROM PIPE.
  4. CONTRACTOR RESPONSIBLE TO INSTALL PIPE WITH LEAK-PROOF JOINTS.

PIPE PENETRATION DETAIL AT SIERRASCAPE WALL FACE



- NOTES:
1. SEE SIERRASCAPE FACING UNIT DETAIL FOR FACING MATERIALS AND DIMENSIONS.
  2. CONTRACTOR IS RESPONSIBLE TO COORDINATE THE PLACEMENT OF THE GEOGRID TO AVOID CONFLICT WITH THE CONTRACT PAVEMENT/OBSTRUCTION SECTION. GEOGRID MUST BE SEPARATED FROM THE PAVEMENT/OBSTRUCTION SECTION BY A MINIMUM OF 3".

GEOGRID PLACEMENT AT PAVEMENT/OBSTRUCTION SECTION

Tensar.

Tensar International Corporation  
2500 Northwinds Parkway | Suite 500  
Alpharetta, Georgia 30009 | 770-344-2090

THIS DOCUMENT IS A PRELIMINARY DESIGN AND SHOULD NOT BE USED FOR CONSTRUCTION. IT IS THE RESPONSIBILITY OF THE USER TO OBTAIN THE NECESSARY INFORMATION FROM THE PROJECT OWNER AND THE DESIGNER TO ENSURE THAT THE DESIGN IS APPROPRIATE FOR THE PROJECT. ANY PARTY ACCEPTING THIS DOCUMENT DOES SO IN CONFIDENCE AND AGREES THAT IT SHALL NOT BE DUPLICATED, WHOLE OR IN PART, NOR DISCLOSED TO OTHERS, WITHOUT THE CONSENT OF TENSAR INTERNATIONAL CORPORATION.

© 2020, TENSAR INTERNATIONAL CORPORATION

PROJECT NAME AND LOCATION

TIC STANDARD DETAILS

OWNER

OWNER PROJECT No.

CLIENT

TIC PROJECT No.

DRAWN BY: O. MARTINEZ

DESIGNED BY: ---

CHECKED BY: R. JOHNSON

ENGINEER OF RECORD (MSE STRUCTURE ONLY): ---

0 06/11/20 ISSUED FOR REVIEW RJ

NO. DATE DESCRIPTION BY

REVISION / ISSUE

SHEET TITLE

SIERRASCAPE  
STANDARD DETAILS

SCALE: AS SHOWN

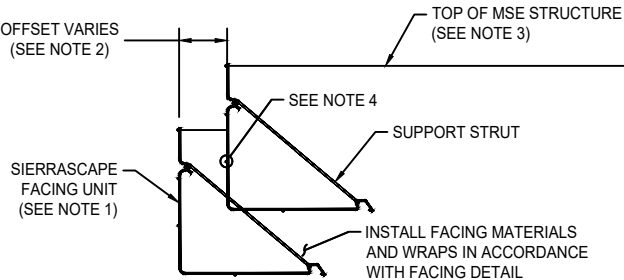
SHEET 5 OF ---

Tensar.

Tensar International Corporation  
2500 Northwinds Parkway | Suite 500  
Alpharetta, Georgia 30009 | 770-344-2090

THIS DOCUMENT IS A PRELIMINARY DESIGN AND SHOULD NOT BE USED FOR CONSTRUCTION. IT IS THE RESPONSIBILITY OF THE USER TO OBTAIN THE NECESSARY PERMITS AND APPROVALS FROM THE APPROPRIATE AGENCIES. TENSAR INTERNATIONAL CORPORATION SHALL NOT BE RESPONSIBLE FOR ANY ERRORS OR OMISSIONS IN THIS DOCUMENT. ANY PARTY ACCEPTING THIS DOCUMENT DOES SO IN CONFIDENCE AND AGREES THAT IT SHALL NOT BE DUPLICATED WHOLE OR IN PART, NOR DISCLOSED TO OTHERS, WITHOUT THE CONSENT OF TENSAR INTERNATIONAL CORPORATION.

© 2020, TENSAR INTERNATIONAL CORPORATION

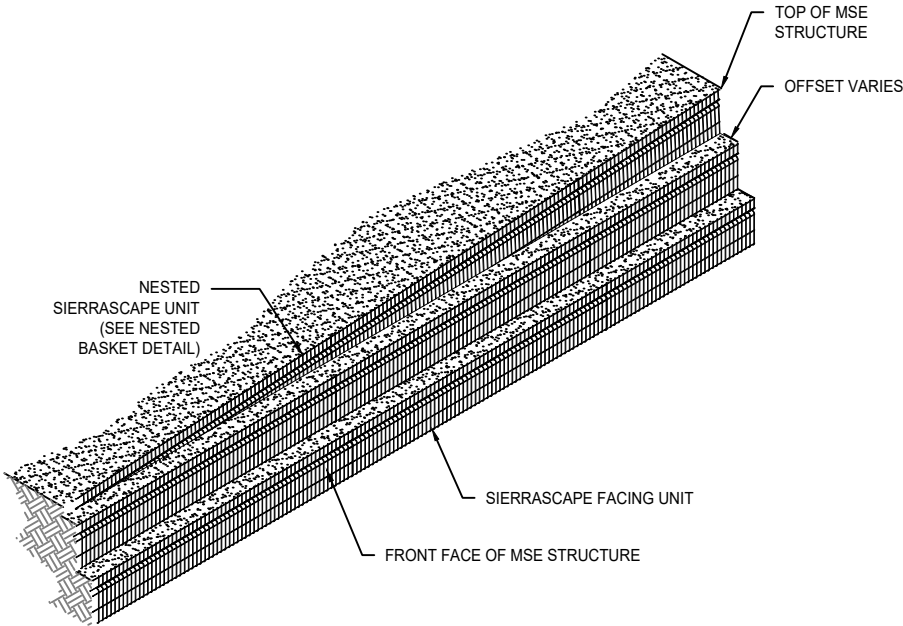


NOTES:

1. SEE SIERRASCAPE FACING DETAIL FOR FACING MATERIALS AND DIMENSIONS.
2. OFFSET AS NEEDED TO ACHIEVE OVERALL BATTER AS SHOWN IN THE CROSS-SECTIONS.
3. SET TOPMOST SIERRASCAPE FACING UNIT INSIDE SIERRASCAPE FACING UNIT BELOW TO FOLLOW GRADE.
4. HORIZONTAL WIRES OF TOPMOST SIERRASCAPE FACING UNIT MAY BE CUT TO ALLOW INSTALLATION OVER STRUTS OF SIERRASCAPE FACING UNIT BELOW.

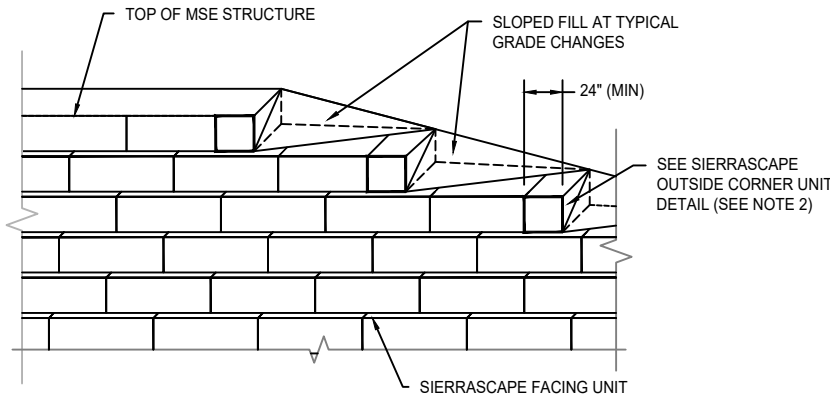
**NESTED BASKET DETAIL (OFFSET)**

NOT TO SCALE



**ISOMETRIC VIEW - NESTED BASKET AT TOP OF MSE STRUCTURE DETAIL (OFFSET)**

NOT TO SCALE

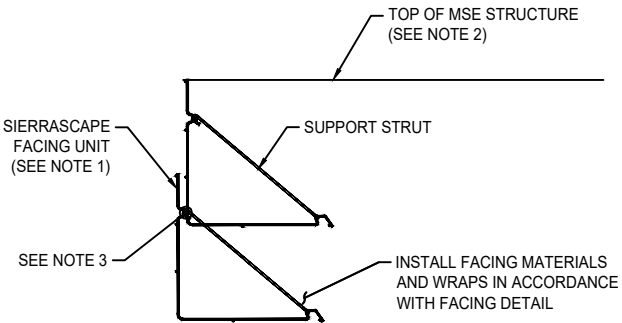


NOTES:

1. SEE SIERRASCAPE FACING DETAIL AND SIERRASCAPE OUTSIDE CORNER UNIT DETAIL FOR FACING MATERIALS AND DIMENSIONS.
2. BEND BASKET 90° PER OUTSIDE CORNER UNIT DETAIL AT STEPS TO ENSURE REINFORCED FILL IS CONTAINED.

**TOP OF MSE STRUCTURE FINISHING DETAIL (OFFSET)**

NOT TO SCALE

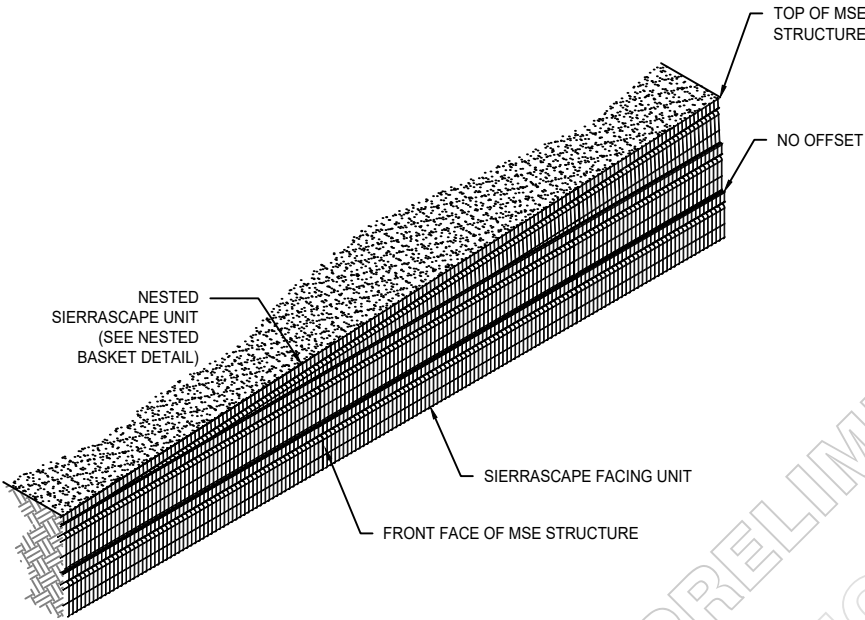


NOTES:

1. SEE SIERRASCAPE FACING DETAIL FOR FACING MATERIALS AND DIMENSIONS.
2. SET TOPMOST SIERRASCAPE UNIT INSIDE SIERRASCAPE FACING UNIT BELOW TO FOLLOW GRADE.
3. HORIZONTAL WIRES OF TOPMOST SIERRASCAPE FACING UNIT MAY BE CUT TO ALLOW INSTALLATION OVER STRUTS OF SIERRASCAPE FACING UNIT BELOW.

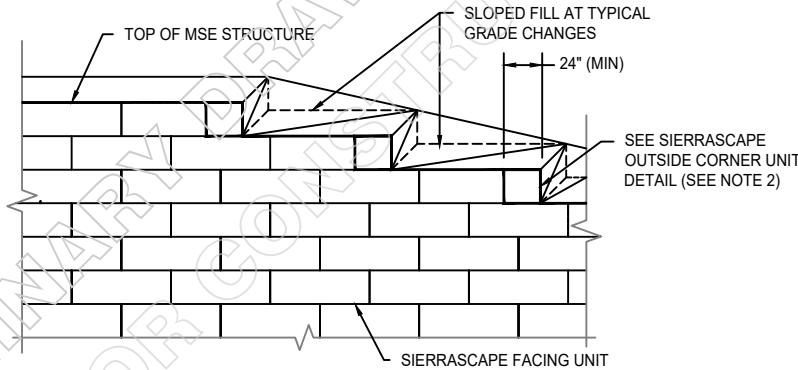
**NESTED BASKET DETAIL (NO OFFSET)**

NOT TO SCALE



**ISOMETRIC VIEW - NESTED BASKET AT TOP OF MSE STRUCTURE DETAIL (NO OFFSET)**

NOT TO SCALE



NOTES:

1. SEE SIERRASCAPE FACING DETAIL AND WWF OUTSIDE CORNER UNIT DETAIL FOR FACING MATERIALS AND DIMENSIONS.
2. BEND BASKET 90° PER OUTSIDE CORNER UNIT DETAIL AT STEPS TO ENSURE REINFORCED FILL IS CONTAINED.

**TOP OF MSE STRUCTURE FINISHING DETAIL (NO OFFSET)**

NOT TO SCALE

PROJECT NAME AND LOCATION

**TIC STANDARD DETAILS**

OWNER

OWNER PROJECT No.

CLIENT

TIC PROJECT No.

DRAWN BY: O. MARTINEZ

DESIGNED BY: ---

CHECKED BY: R. JOHNSON

ENGINEER OF RECORD (MSE STRUCTURE ONLY): ---

06/11/20 ISSUED FOR REVIEW RJ

NO. DATE DESCRIPTION BY

REVISION / ISSUE

SHEET TITLE

**SIERRASCAPE STANDARD DETAILS**

SCALE: AS SHOWN

SHEET 6 OF ---