

Don't settle.
Use InterAx®.



Amalgamated Sugar Tanks

Nampa, ID

CHALLENGE

Amalgamated Sugar needed to construct 3 tank pads that were 69 feet in diameter. The subgrade conditions required reinforcement to handle the high loads of the tank. An unreinforced section of over-excavation and replacement with crushed aggregate would be over 4-5 feet thick. The construction schedule and cost for this type of foundation improvement was not realistic for this project.

TENSAR SOLUTION

The engineer recognized the benefit of utilizing a mechanically stabilized layer (MSL) for the foundation sections. They used the shallow foundation module in Tensar+ to determine the acceptable thickness of the MSL to meet the requirements of the bearing capacity and settlement limits. The MSL thickness was determined to be 24 inches with 2 layers of NX850. This solution reduced the excavation and aggregate by over 50% for the project. Knife River was able to construct this section in a timely manner compared to the unstabilized alternative.

BENEFITS

- Cut construction schedule by weeks for foundation work
- 50% excavation and aggregate reductions saved an estimated \$200K

Tensar®

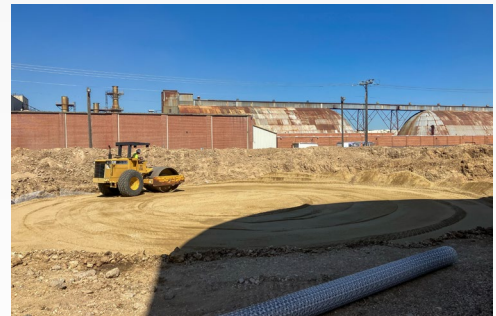
A Division of CMC

PROJECT DETAILS

Installed by:
Knife River

Installation:
Summer 2024

Product:
NX850 InterAx Geogrid



let us help you with your next challenge: tensarcorp.com | 800-TENSAR-1



We're CMC. You'll find our products strengthening and reinforcing the infrastructure nearly everywhere on the planet – in sports stadiums and public buildings as well as highways, bridges, railways and other structures. To serve this global market, CMC maintains facilities across the United States, Europe and Asia. These sites include everything from local recycling centers, steel mini-mills and micro-mills to large-scale fabrication centers, heat-treating facilities as well as other operations. cmc.com ©CMC 2024