

Don't settle.
Use InterAx®.



Airport Road Development

Elgin, IL

CHALLENGE

A heavy-duty truck parking lot was designed to serve several adjacent distribution centers in Elgin, Illinois. Differential settlement was a concern due to the site's previous use as a landfill, so the site was initially graded by placing 3 to 8 feet of fine screening material ovetop and waiting a year to allow it to settle, then placing more as necessary. The engineer connected with a Tensar representative about designing a cost-effective flexible pavement section.

TENSAR SOLUTION

Tensar engineers used the Tensar+ asphalt pavement module to design a section that could meet the client's needs. A two-layer InterAx geogrid and CA-6 aggregate system was chosen to mitigate the risk of differential settlement and provide a cross section with the capacity required for heavy-duty truck use. The contractor had a large stockpile of recycled asphalt millings they wished to use in the first lift of aggregate, and the substitution of this material saved close to \$2 million in aggregate cost over the 150,000 square yard site while reducing trucking trip distances at the same time.

BENEFITS

- Design from Tensar+ mitigated risk of differential settlement
- Contractor found a use for 35,000 cubic yards of asphalt millings
- Use of recycled asphalt pavement saved \$2 million in aggregate costs

Tensar®

A Division of CMC

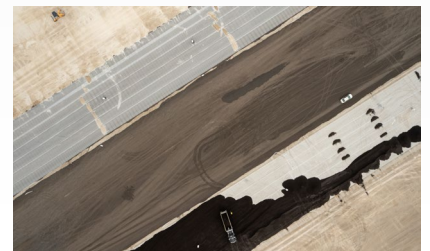
PROJECT DETAILS

General Contractor:
Principle Construction Corp.

Installed by:
Plote Construction

Installation:
July 2024

Product:
NX850 InterAx Geogrid



Aerial view of each layer of geogrid and aggregate during installation

let us help you with your next challenge: [tensarcorp.com](https://www.tensarcorp.com) | 800-TENSAR-1



We're CMC. You'll find our products strengthening and reinforcing the infrastructure nearly everywhere on the planet – in sports stadiums and public buildings as well as highways, bridges, railways and other structures. To serve this global market, CMC maintains facilities across the United States, Europe and Asia. These sites include everything from local recycling centers, steel mini-mills and micro-mills to large-scale fabrication centers, heat-treating facilities as well as other operations. **cmc.com** ©CMC 2024